



Baraldi

THE NEXT RELEASE

# HIGH PRESSURE DIE CASTING

---

## LUBRICANTS CATALOGUE



# INDEX —

**2 Die Casting Lubricants**

**2** Aluminium

**3** Magnesium

**3** Zinc

**4 Piston Lubricants**

**5 Auxiliary**

**5** Liquid Auxiliaries

**6** B-Tech Cleaners

**7** Solid Auxiliaries

**8** Spray Can Lubricants

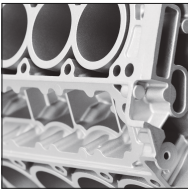




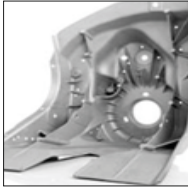

**9 Equipments**

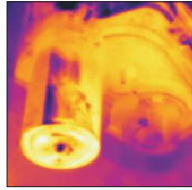


# DIE CASTING LUBRICANTS



## ALUMINIUM

	TYPE OF CAST	PRODUCT NAME	COMPACTION Flow and antishrinkage power	COOLING Application efficiency	CLEANLINESS Die clean., surface finish	LUBRICATION Moving cores	ROUGHNESS Casts surface roughness
 <p><b>HEAVY CASTS</b> Engine blocks, big carters, automotive (high weight, over 8 Kg)</p>		<b>CASTING 095</b>	●●○	●●●	●●●	●●●	●●○
		<b>CASTING 011</b>	●●●	●●○	●●●	●●●	●●○
 <p><b>AVERAGE WEIGHT</b> Pumps, valves, automotive (variable thickness, weight up to 8 Kg)</p>		<b>CASTING 820</b>	●●○	●●●	●●●	●●●	●●○
		<b>CASTING 865</b>	●●○	●●●	●●○	●●●	●●●
 <p><b>SMALL AND AESTHETIC CASTS</b> Illumin., Household applian. (aesthetic parts, electr.engine housing)</p>		<b>CASTING 650</b>	●●●	●●○	●●●	●●○	●●○
		<b>CASTING 077</b>	●●○	●●○	●●●	●●●	●●○
 <p><b>HEATERS</b> Heating radiators, other finned parts</p>		<b>CASTING 2152</b>	●●●	●●●	●●○	●●●	●●●
		<b>CASTING 2186</b>	●●●	●●○	●●●	●●●	●●●
 <p><b>LOW ROUGHNESS PARTS</b> Casts with tracks for gaskets (low surface roughness)</p>		<b>CASTING 760</b>	●●●	●●○	●●○	●●●	●●●
		<b>CASTING 865</b>	●●○	●●●	●●○	●●●	●●●
 <p><b>STRUCTURAL - HIGH INTEGRITY CASTS</b> Automotive structural parts, low porosity, high compactness</p>		<b>CASTING 176</b>	●●○	●●●	●●●	●●●	●●○
		<b>CASTING 2155 M</b>	●●○	●○○	●●●	●●●	●●○
 <p><b>WATER-FREE PRODUCTS</b> Products for Microdosing, water-free</p>		<b>CASTING 2156</b>	●●○	●○○	●●●	●●●	●●○
		<b>CASTING 2155 M</b>	●●○	●○○	●●●	●●●	●●○



**WARM-UP LUBE**  
Products for warm-up / start-up

TYPE OF CAST	PRODUCT NAME	COMPACTION Flow and antishrinkage power	COOLING Application efficiency	CLEANLINESS Die clean., surface finish	LUBRICATION Moving cores	ROUGHNESS Casts surface roughness
	<b>WARM-UP LUBE 04</b>	●●○	●○○	●●●	●●●	●●○
	<b>SPRAYLUBE TF/04</b>	●●○	●○○	●●●	●●●	●●○

## MAGNESIUM



**WIDE SURFACES, THIN THICKNESSES**  
Steering wheels, dashboards, big dimension casts

TYPE OF CAST	PRODUCT NAME	COMPACTION Flow and antishrinkage power	COOLING Application efficiency	CLEANLINESS Die clean., surface finish	LUBRICATION Moving cores	ROUGHNESS Casts surface roughness
	<b>CASTING 2174</b>	●●●	●●○	●●○	●●○	●●●
	<b>CASTING 176</b>	●●○	●●●	●●●	●●●	●●○



**3C APPLIANCES**  
Very thin thicknesses (laptop, phone, 3C)

	<b>CASTING 2174</b>	●●●	●●○	●●○	●●○	●●●
--	---------------------	-----	-----	-----	-----	-----

## ZINC



**AVERAGE DIMENSION CASTS**  
Valves, parts for rearview mirror, brake pumps

TYPE OF CAST	PRODUCT NAME	COMPACTION Flow and antishrinkage power	COOLING Application efficiency	CLEANLINESS Die clean., surface finish	LUBRICATION Moving cores	ROUGHNESS Casts surface roughness
	<b>CASTING 2124</b>	●●○	●●●	●●○	●●○	●●○
	<b>CASTING 2123</b>	●●○	●○○	●●○	●●●	●●●



**SMALL PARTS**  
Multicavities, low dimension casts

	<b>CASTING 750</b>	●●○	●○○	●●●	●●○	●●●
--	--------------------	-----	-----	-----	-----	-----

# PISTON LUBRICANTS

FAMILY OF PRODUCT	PRODUCT NAME	TYPE OF PISTON			TYPE OF PRODUCT	CHARACTERISTICS OF THE PRODUCT
		STEEL	CAST IRON	CU/BE		
WATER BASE	PISTOCAST 2106	<input type="radio"/>	<input type="radio"/>	<input checked="" type="radio"/>	SYNTHETIC BASE, AQUEOUS EMULSION	Pistons up to 80 mm. Good adhesive power. Milky white, viscous.
	PISTOCAST 2109	<input checked="" type="radio"/>	<input checked="" type="radio"/>	<input checked="" type="radio"/>	MINERAL BASE, PIGMENT FREE	For general purpose and any diameter. High lubricating power. Viscosity 450 cSt at 40°C. Color red to brown.
MINERAL BASE / GRAPHITE	PISTOCAST 2108	<input checked="" type="radio"/>	<input checked="" type="radio"/>	<input checked="" type="radio"/>	MINERAL BASE, PIGMENT: GRAPHITE	For heavy duty / Big diameter pistons. Elevated lubricating power. Viscosity 500 cSt at 40°C. Color dark brown.
	PISTOCAST 2139	<input checked="" type="radio"/>	<input checked="" type="radio"/>	<input checked="" type="radio"/>	MINERAL BASE, PIGMENT: GRAPHITE	For heavy duty / Big diameter pistons. Elevated lubricating power. Viscosity 500 cSt at 40°C. Color dark brown.
SYNTHETIC / HIGH PERFORMANCE	PISTOCAST 2116	<input type="radio"/>	<input type="radio"/>	<input checked="" type="radio"/>	SYNTHETIC BASE	Elevated performance, for any diameter. High adhesion power. Biodegradable product. Viscosity 300 cSt at 40°C. Color bright red.
	PISTOCAST 2119	<input type="radio"/>	<input type="radio"/>	<input checked="" type="radio"/>	SYNTHETIC BASE	Elevated performance, for any diameter. High adhesion power. Biodegradable product. Viscosity 150 cSt at 40°C. Color bright red.
	PISTOCAST 2126	<input type="radio"/>	<input type="radio"/>	<input checked="" type="radio"/>	SYNTHETIC BASE	Elevated performance, for any diameter. High adhesion power. Biodegradable product. Viscosity 500 cSt at 40°C. Color bright red.
SYNTHETIC + GRAPHITE	PISTOCAST 2124	<input type="radio"/>	<input type="radio"/>	<input checked="" type="radio"/>	SYNTHETIC BASE, PIGMENT: GRAPHITE	Elevated performance, for high diameter pistons. High adhesion power. Viscosity 300 cSt at 40°C. Color dark purple.
SOLID BEADS	PISTOCAST 2103	<input checked="" type="radio"/>	<input checked="" type="radio"/>	<input checked="" type="radio"/>	SOLID, GRANULATE, PIGMENT: GRAPHITE	For general purpose and for any diameter. Very high lubricating power reinforced with graphite. Granule diameter 0.3 – 1.0 mm, Color brown.
	PISTOCAST 2104	<input checked="" type="radio"/>	<input checked="" type="radio"/>	<input checked="" type="radio"/>	SOLID, GRANULATE, PIGMENT FREE	For general purpose and for any diameter. Very high lubricating power. Granule diameter 0.3 – 1.0 mm, Color black.



# AUXILIARY LUBRICANTS & LIQUID ADDITIVES

## LIQUID AUXILIARIES

---

PRODUCT NAME	APPLICATION	TYPE OF PRODUCT	CHARACTERISTICS OF THE PRODUCT
<b>B-TECH HV 68</b>	HYDRAULIC FLUID	MINERAL BASE	Very high anti-wear power. Elevated Viscosity Index.
<b>B-TECH HFDU 46</b> <b>B-TECH HFDU 68</b>	HYDRAULIC FLUID	SYNTHETIC BASE	Safety products, fire retardant. HFDU Class. Viscosities 46 and 68 cSt at 40°C.
<b>B-TECH LUBE 2101</b>	TRIMMING PRESS LUBRICANT	MINERAL BASE, CARRIER: MINERAL	Product for general purpose.
<b>B-TECH TOGGLE 2101, 2102, 2103</b>	LUBRICANT FOR TOGGLES / GENERAL LUBRICATION	MINERAL BASE	Elevated adhesive/antidripping power. Viscosity (cSt at 40 °C): 2101 = 200 cSt; 2102 = POL/EP/2 = 450 cSt; 2103 = 320 cSt.
<b>B-TECH QUENCH 2102</b>	ADDITIVE FOR QUENCHING OF ALUMINIUM CASTS	SYNTHETIC BASE, CARRIER : WATER	Facilitates the dripping of the piece, leaving a protective / anticorrosive film on Aluminium.
<b>B-TECH PROTECTIVE 2180</b>	OILY PROTECTIVE FOR MOLDS AND PLATENS	MINERAL BASE	Protects the mold during storage and the platens from corrosion. Dewatering action.

# B-TECH CLEANERS

---

PRODUCT NAME	APPLICATION	TYPE OF PRODUCT	CHARACTERISTICS OF THE PRODUCT
<b>B-TECH CLEANER 2130</b>	SANITIZING AGENTS FOR FOUNDRY FLUIDS	COMPOUND OF SANITIZING AGENTS	Reduce the levels of contamination of diluted emulsions. Used alternately.
<b>B-TECH CLEANER 2131</b>	SANITIZING AGENTS FOR FOUNDRY FLUIDS	COMPOUND OF SANITIZING AGENTS	Reduce the levels of contamination of diluted emulsions. Used alternately.
<b>B-TECH CLEANER 2103</b>	DETERGENTS FOR LUBRICATING SPRAYERS AND MOLDS	SYNTHETIC BASE	Quick action in removing deposits and fouling from sprayers and nozzles and from the surface of the mold. Environmentally friendly product.
<b>B-TECH CLEANER 2107</b>	DETERGENTS FOR LUBRICATING SPRAYERS AND MOLDS	SYNTHETIC BASE, AQUEOUS EMULSION OF CLEANER 2103	Quick action in removing deposits and fouling from sprayers and nozzles and from the surface of the mold.
<b>B-TECH CLEANER 2113</b>	DETERGENT/ ANTISCALE FOR LUBRICATING PLANTS/PIPING	COMPLEX MIXTURE OF DETERGENTS AND SANITIZING AGENTS	Removes scale, deposits and biofilm from tanks and pipes where diluted emulsions circulate.
<b>B-TECH CLEANER 2121</b>	DETERGENT/ ANTISCALING FOR MOLDS	COMPLEX MIXTURE OF ALKALY DETERGENTS	Remove scale and soldering from the mold. Suitable for ultrasonic cleaning.
<b>B-TECH ANTIFOAM 2102</b>	ANTIFOAM ADDITIVES FOR VACUUM DISTILLER	DISPERSIBLE IN WATER	To be added to the vacuum evaporators. Silicone base.
<b>B-TECH ANTIFOAM 2103</b>	ANTIFOAM ADDITIVES FOR VACUUM DISTILLER	DISPERSIBLE IN WATER	To be added to the vacuum evaporators. Non Silicone base.

# SOLID AUXILIARIES

PRODUCT NAME	APPLICATION	TYPE OF PRODUCT	CHARACTERISTICS OF THE PRODUCT
<b>B-TECH PASTE 2101</b>	PASTE FOR START-UP	MINERAL BASE, PIGMENTS: GRAPHITE, ALUMINIUM	High consistency even at melted state, very high releasing power.
<b>B-TECH PASTE 2102</b>	LUBRICATING PASTE FOR EJECTOR PINS	MINERAL BASE, PIGMENT: COPPER	Elevated thermal withstanding. Infusible.
<b>B-TECH PASTE 2106</b>	LUBRICATING PASTE FOR VERY HIGH TEMPERATURE	SYNTHETIC BASE, PIGMENT: GRAPHITE	High performance. Resists at very high temperature, anti-sticking and anticorrosive protection.
<b>B-TECH GREASE 2110</b>	PROTECTIVE GREASE	MINERAL BASE	Antirust protective. Also suitable for very high temperature. Water-repellent action. It also applies on existing rust.
<b>B-TECH DEMETAL 2100</b>	ANTISOLDERING PASTE	MINERAL BASE, PIGMENT: GRAPHITE	Prevents and remove soldering on the mold. Non hazardous for users.
<b>B-TECH DECAL 2103</b>	LADLE COATING	MINERAL BASE, PIGMENT: CERAMIC	Antiadhesion coating for ladles and foundry tools.





# SPRAY CAN LUBRICANTS

---

PRODUCT NAME	APPLICATION	TYPE OF PRODUCT	CHARACTERISTICS OF THE PRODUCT
<b>SPRAYLUBE TF/04</b>	LUBRICATING RELEASE AGENT USED FOR WARM-UP, START-UP AND AS A REINFORCE	SYNTHETIC, BIODEGRADABLE, NON FLAMMABLE	To replace greases and pastes. Also used as a reinforce on pins, cores, overstressed parts in running condition.
<b>SPRAYLUBE CU</b>	LUBRICATING RELEASE AGENT WITH SOLID PIGMENTS	MICRONIZED GRAPHITE, FLAMMABLE !	For ejector pins. Used for assembling.
<b>SPRAYGRAPH G/30</b>	LUBRICATING RELEASE AGENT WITH SOLID PIGMENTS	MICRONIZED GRAPHITE, FLAMMABLE !	For dry lubrication, used as preparation of the die surface. To be applied on cold surface !

# EQUIPMENTS

## EQUIPMENT NAME

## DESCRIPTION

## CHARACTERISTICS

### CASTO-MIX 0540

CASTO-MIX 0540 IS A COMPLETE SUPPLY UNIT FOR RELEASE AGENT. It dilutes, stores and pumps the ready-to-use release agent to the lubricating sprayer. It can feed 20 to 100 liters/min depending on the operating pressure.

- Accurate dosing equipment
- 125 liters AISI 304 Stainless Steel waiting tank
- MK5/8" Pedrollo pump
- Inverter for accurate setting of outlet pressure

### PLUNG LUB SYSTEM

DOSING EQUIPMENT FOR PISTON LUBRICANT. Compact and easy to install, it guarantees perfect constancy of volume dosage. Working either with air (spray application) or as airless (drip application).

- Transparent container
- Volumetric dosage, pneumatically driven
- Filters, one way valves
- Air spray or airless application

